

Leslie Debrief

NHC Leslie Wind History

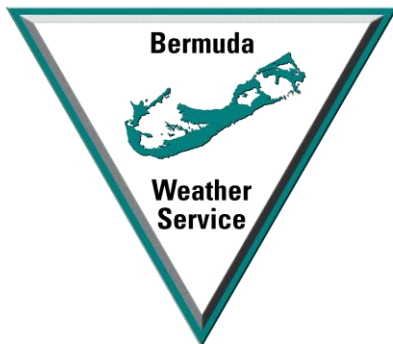
http://www.nhc.noaa.gov/archive/2012/graphics/a12/loop_S.shtml

NHC Leslie Track History

http://www.nhc.noaa.gov/archive/2012/graphics/a12/loop_5W.shtml

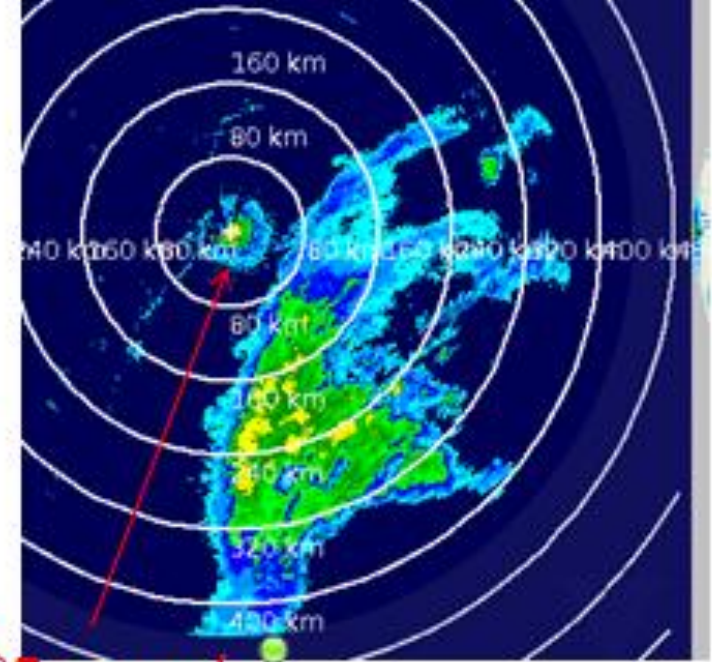
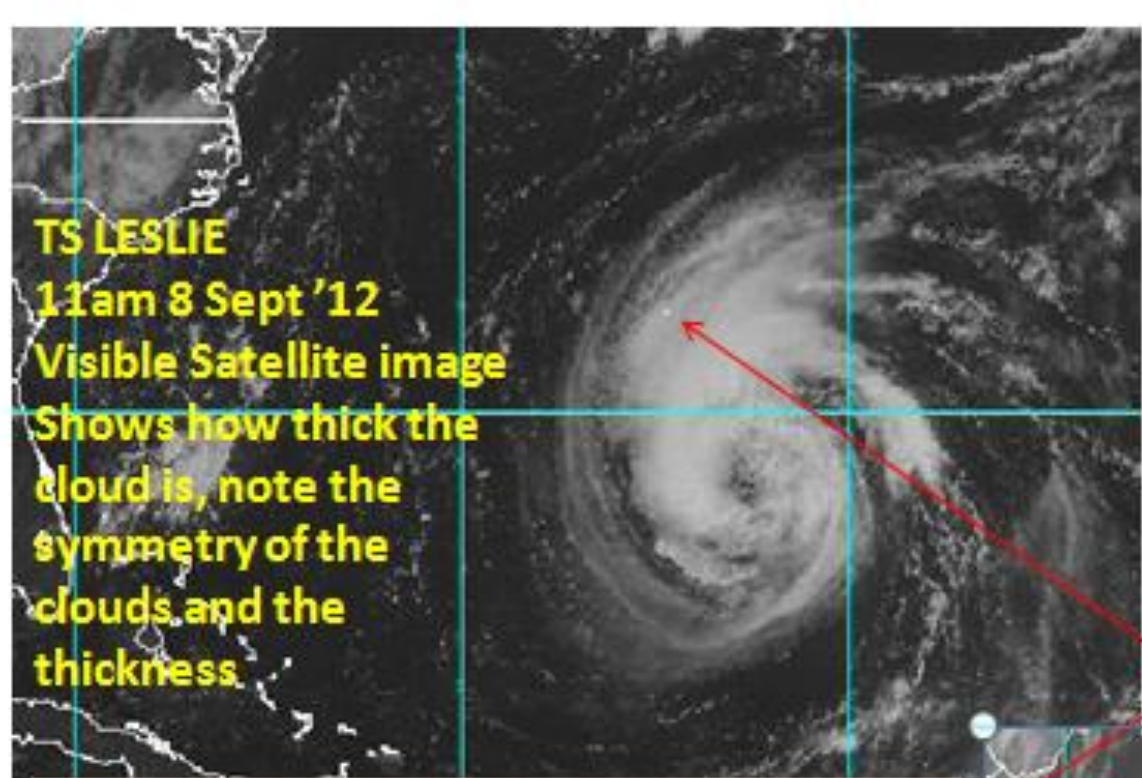
BWS Leslie RADAR loop

<http://www.weather.bm/EMO/leslieradanimation/index.html>



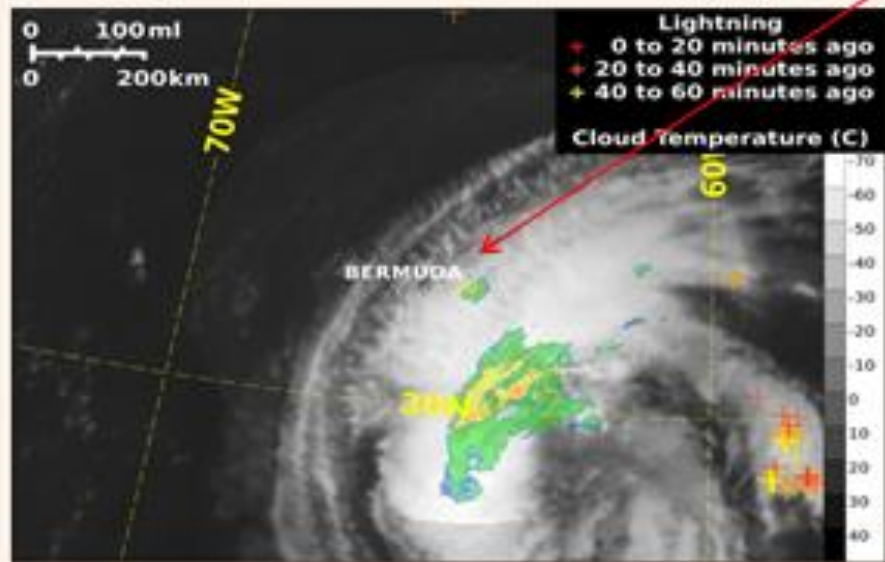
Kimberley Zuill
27 Sept 2012

TS LESLIE
11am 8 Sept '12
Visible Satellite image
Shows how thick the
cloud is, note the
symmetry of the
clouds and the
thickness

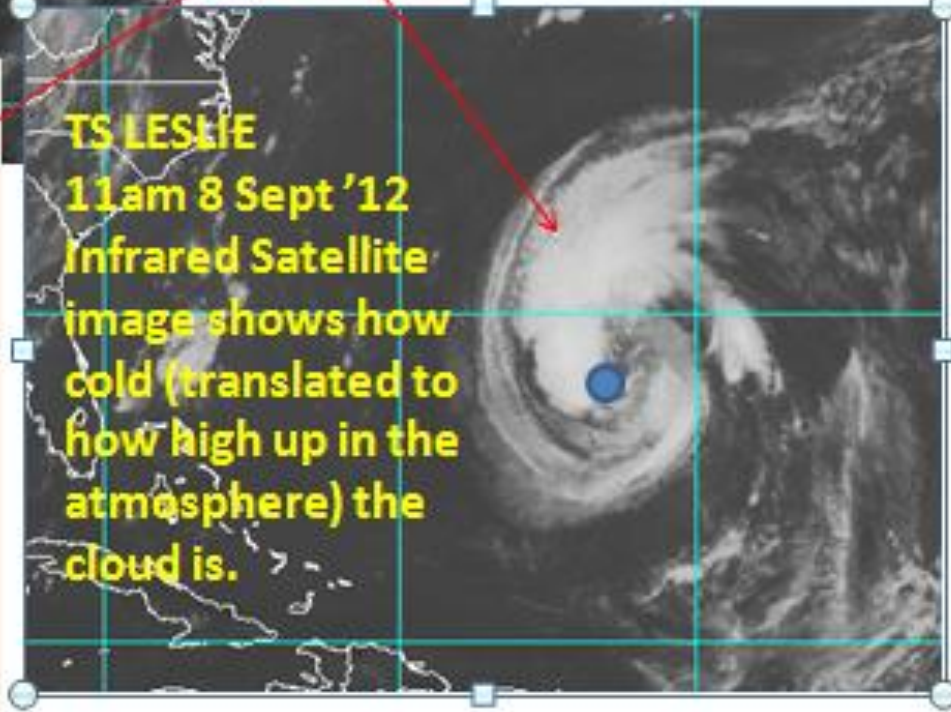


Bermuda

IR Satellite, Lightning & Radar
10:15 am, Sep 8th, 2012



TS LESLIE
11am 8 Sept '12
Infrared Satellite
image shows how
cold (translated to
how high up in the
atmosphere) the
cloud is.



Tropical Storm LESLIE

9 Sept 2012

Tropical Storm force winds verified
Elevated regions 42 gusting 62 kts

8:40 am local

9 Sept '12

Commissioners Point (11:40)

Wind Speed: 34.2 kt

Wind Speed Max: 43.3 kt

Wind Direction: 348 °

Precipitation: 0.0 mm

Air Temperature: 77.9 °F

Humidity: 92.0 %

Fort Prospect (11:50)

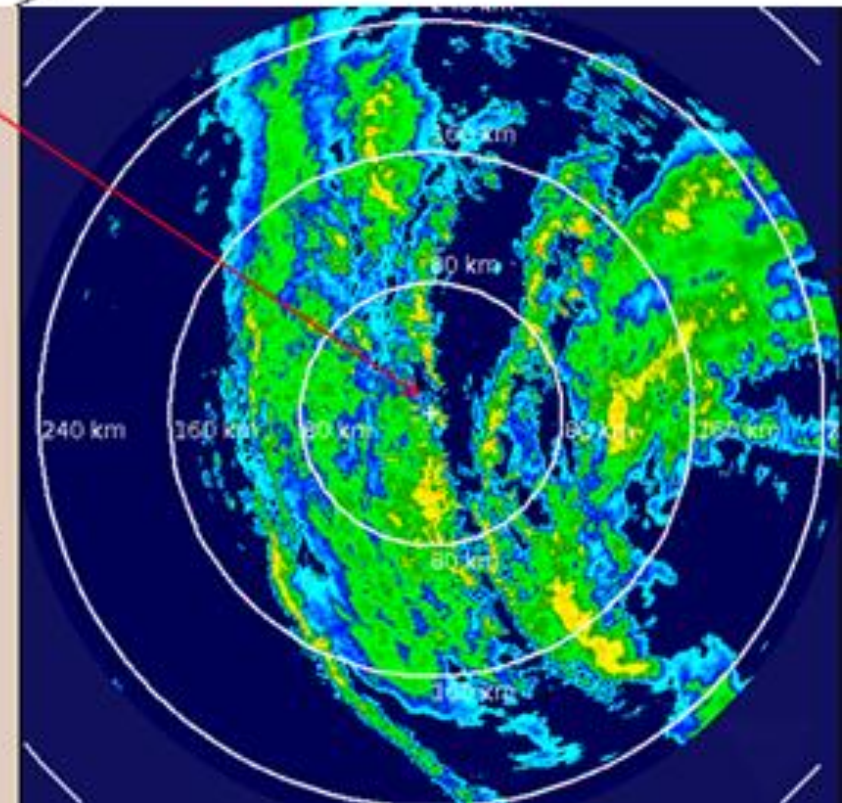
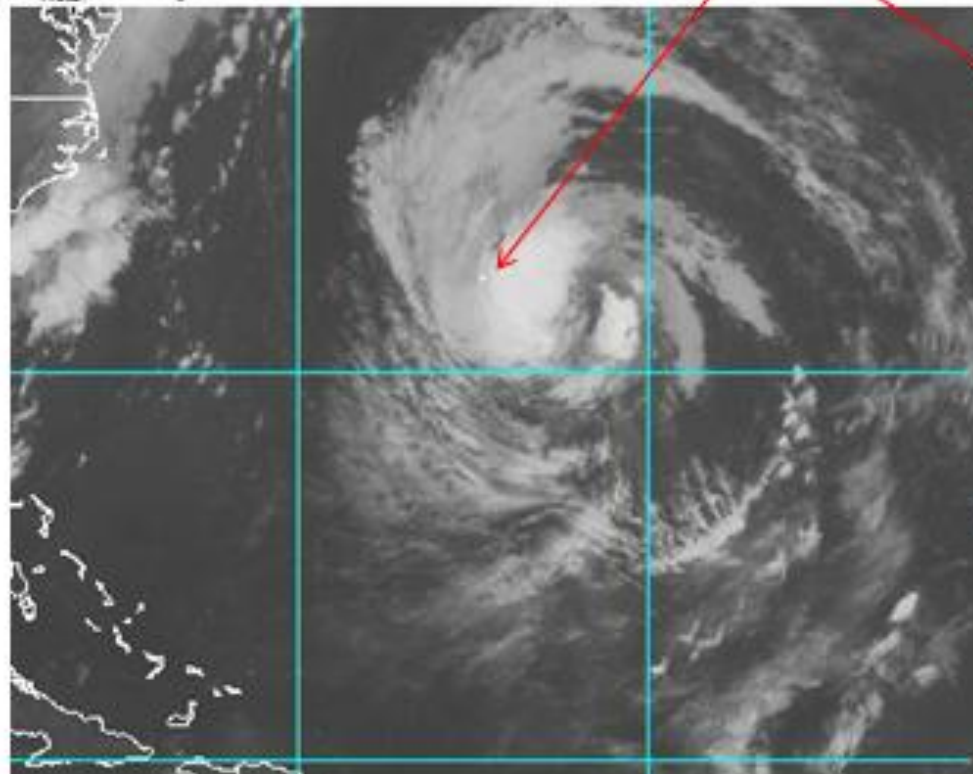
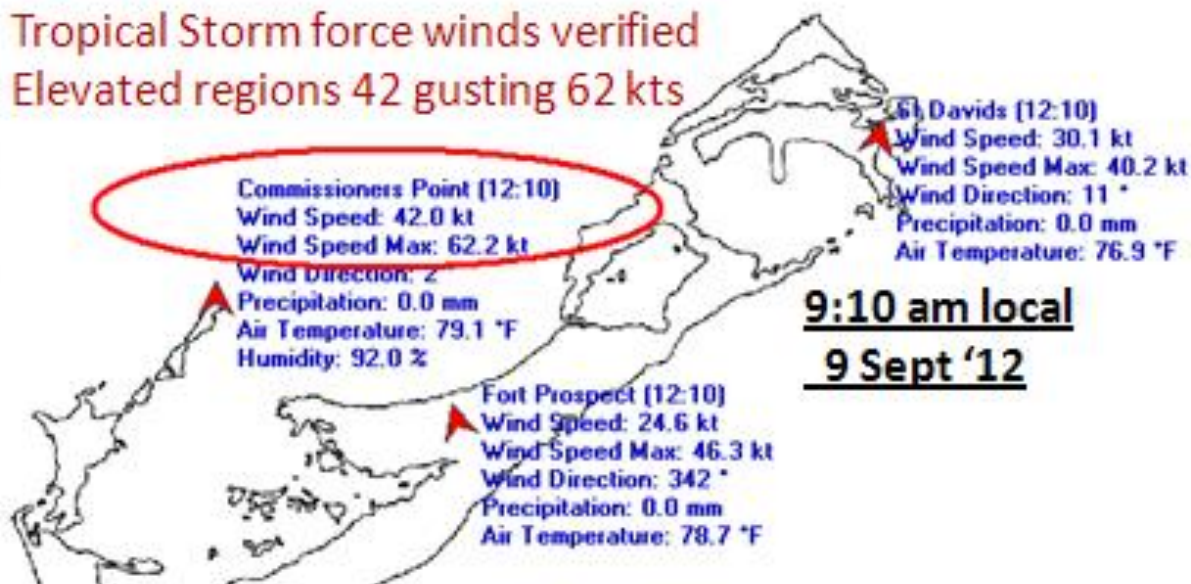
Wind Speed: 21.5 kt

Wind Speed Max: 38.7 kt

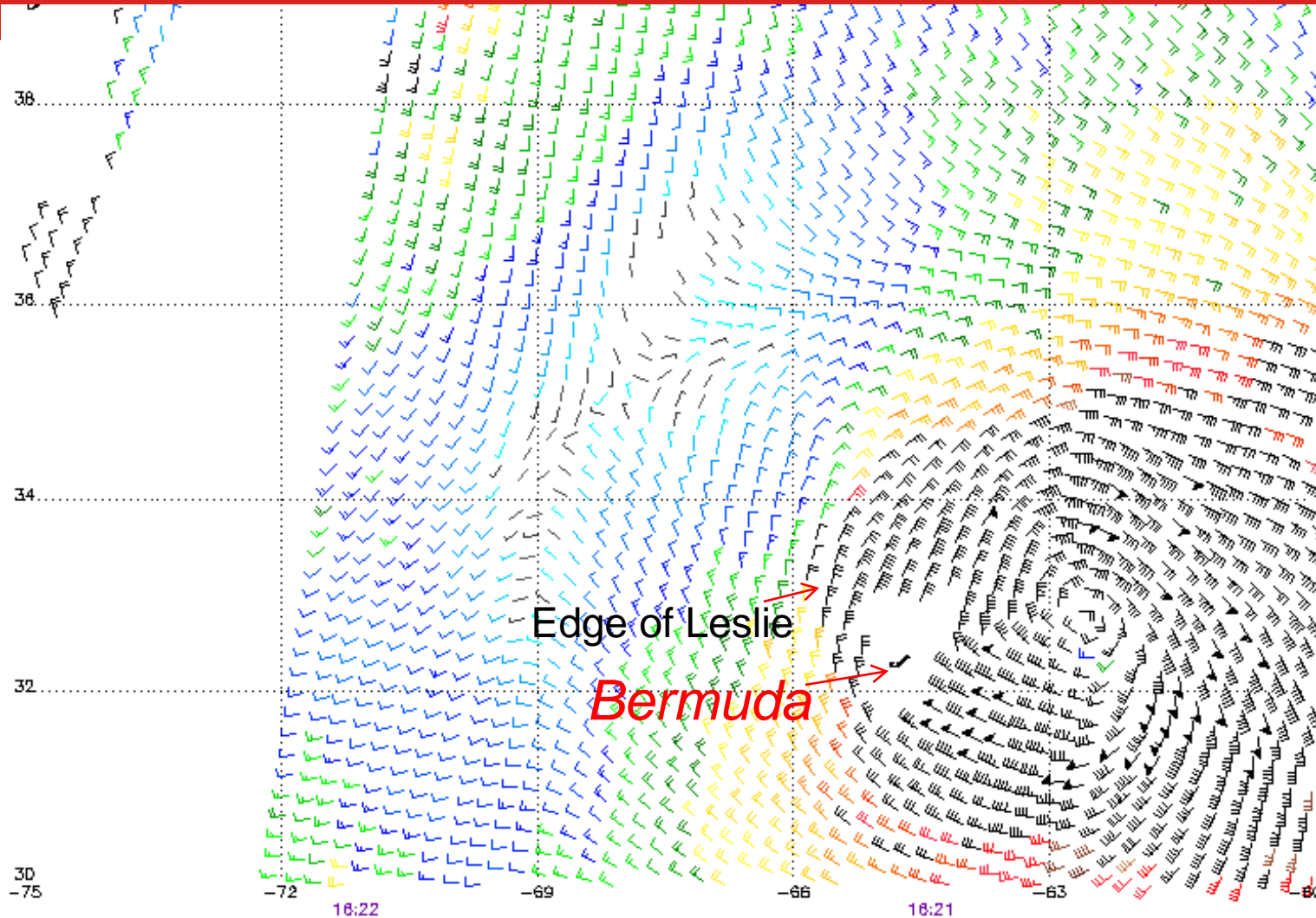
Wind Direction: 320 °

Precipitation: 0.0 mm

Air Temperature: 78.2 °F



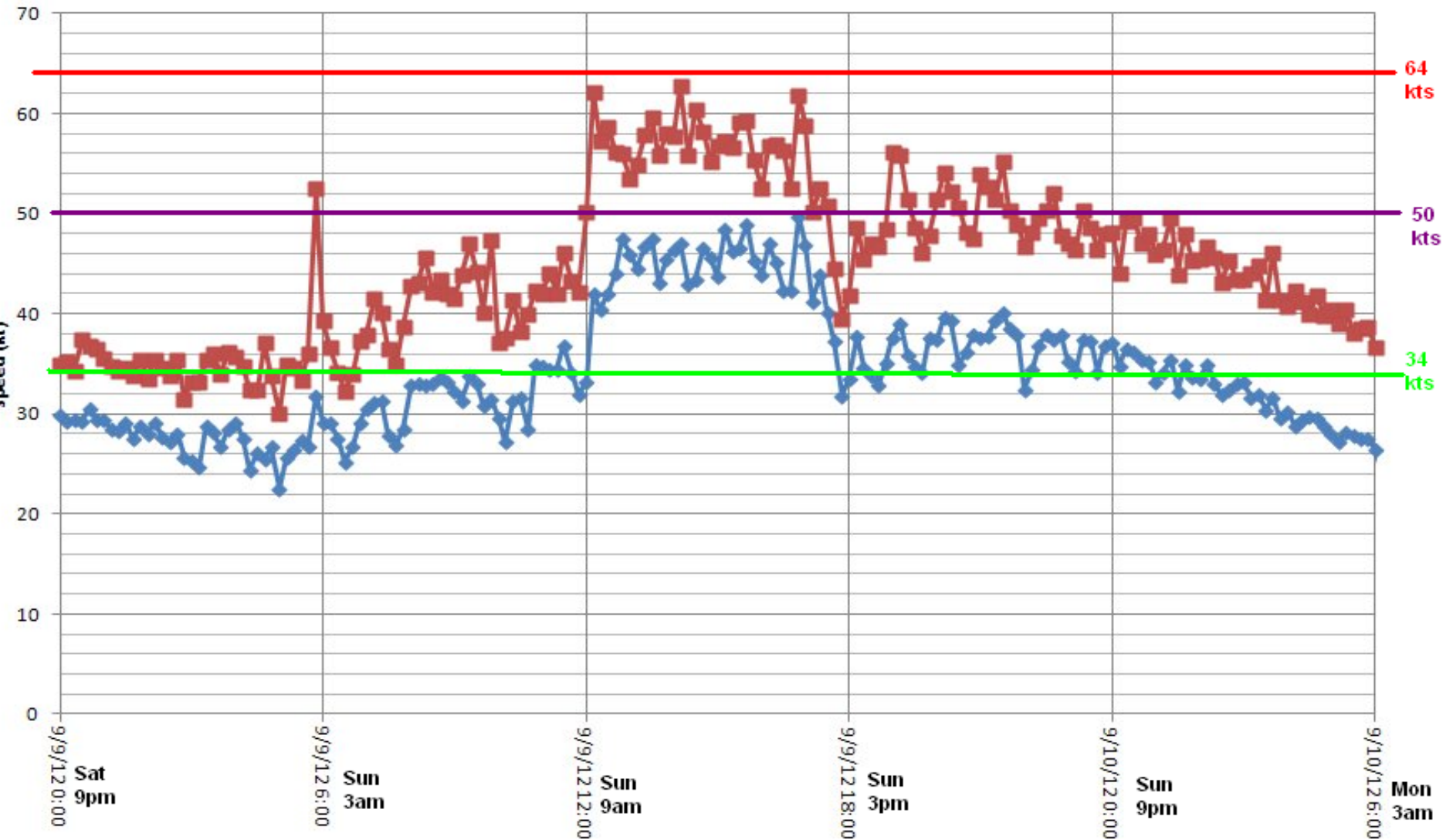
OSCAT Winds during Leslie passage - 1:21 pm



Note: 1) Times are GMT 2) Times along bottom correspond to measurement at 40N

Comm. Pt AWOS Winds

— Radar AWOS - Comm Pt Wind Speed (kts)
— Radar AWOS - Comm Pt Wind Gust (kts)



Forecast – Review & Verification - Winds

Thursday 4:30pm – Tropical Storm Watch issued – to make evening news, fcst 52hr

Thursday 11:30pm Forecast

** Sat: E 20-30 g 40 incr 25-35 g 50 eve, 35-45 g 60 late night (Seas 15-20ft)

Sun: NNE 35-50 g 65, incr 60 g 75 in heavy showers, NW 25-35 ovn (Sea 18-25ft)

Friday 11:30pm Forecast

** Sat: ENE 15-25, g 35 aftn, NE 20-30 g 40 ovn (Seas 12-18ft)

Sun: NNE 25-35 g 50, ocnl incr 30-40 g 60, NW ovn (Sea 15-20ft)

Saturday 5:30am – Tropical Storm Warning issued

Saturday 11:30pm Forecast

** Sat ovn: NE 15-25, g 35 aftn, NE 20-30 g 40 ovn (Seas 10-15ft)

Sun: NNE 25-35 g 45, ocnl incr 30-40 g 50, NNW ovn (Sea 12-18ft)

** Saturday Observed: NE 15-20 kt

Sunday Observed: NNE 20-25 g 40kt; NW 34 g 54kt (62 in elevated areas) midday;
30g 40 through eve (35-40 g 50 in elevated areas), decr WNW 25-35 g 40 ovn

Highest winds at TXKF: 34 g 54 kt (12:51pm)

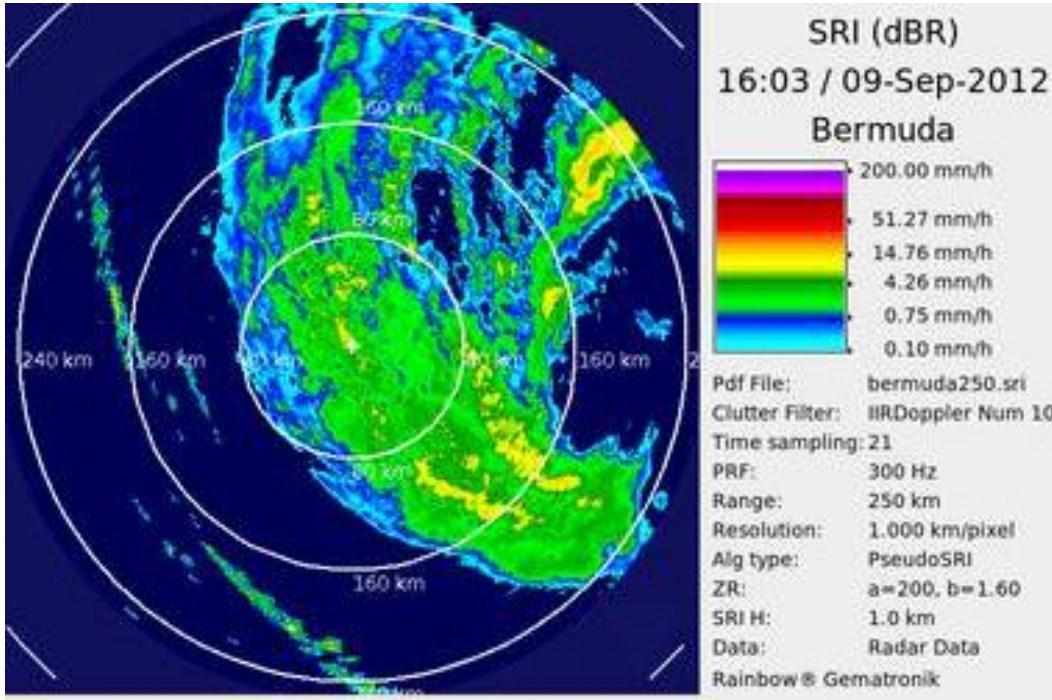
Highest winds Com Pt: 50kt; highest gust 63 kt (12-3pm)



TS Watch verified: 60 hrs after issue

TS Warning verified: 31 hr after issue

Rainfall – measurements from TXKF



<u>Date</u>	<u>Inches</u>
8 th	0.15
9 th	4.20
10 th	0.82
Total	5.17



Conclusion

- Leslie was a difficult system to forecast – reminiscent of Bertha (only stalled system in our region on record)
 - Communication of uncertainty
 - Track & intensity forecasts shifts
 - Once Hurricane Hunter plane went in late Wed
- Leslie was more of a rainfall, sea swell & waves system, than wind event
- Tropical Storm watch and warnings verified
- At no point were watches or warnings in excess of conditions observed
- TS Warning extended for Sun night (due to tropical storm winds in elevated areas)

Thank you for your attention, any Questions?